

# DGO Gold Limited

ABN 96 124 562 849

## Annual General Meeting Implementing The Strategy

November 16, 2016

# Important Information

## Forward Looking Statements

This presentation contains certain “Forward-Looking Statements” regarding future events and the future financial performance of DGO. All statements, other than statements of historical fact, included herein, including without limitation statements regarding forecast cash flows and potential mineralisation resources and reserves, exploration results and future expansion plans and development objectives of DGO Gold Limited are forward-looking statements that involve various risks and uncertainties many of which are outside the control of DGO. Any forward looking statements included in this presentation involve subjective judgement and analysis. There can be no assurance that such statements will prove to be accurate and actual results and future events could differ materially from those anticipated in such statements.

Except as required by law, no representation or warranty, express or implied, is made as to the fairness, accuracy, completeness, reliability or correctness of the information, opinions and conclusions, or as to the reasonableness of any assumption contained in this presentation. To the extent permitted by law, you release DGO Gold Limited (DGO) and its officers, employees and agents from any liability without limitation arising as a result of the reliance by you or any other person on anything contained in or omitted from this presentation.

The distribution of this presentation or information contained in it in jurisdictions outside Australia may be restricted by law and you should observe any such restrictions. The information contained in this presentation does not constitute investment, legal, accounting, regulatory, taxation or other advice and it does not take into account your investment objectives or personal situation or needs. You are solely responsible for seeking independent professional advice in relation to this presentation and any action taken on the basis of the information contained in it. No responsibility or liability is accepted by DGO or its officers, employees or agents for the information contained in this presentation or any action you take on the basis of this presentation.

# Implementing The Strategy

- Implementing the strategy of greenfield exploration for **sediment hosted gold deposits in Australia** utilising research being undertaken by CODES at the University of Tasmania over the past decade.
- **Secured mineral exploration tenements** in the high priority sedimentary basins across Western Australia and South Australia (3,175km<sup>2</sup> secured).
- **Drill targets identified** at Judges and Black Flag – RC drilling to commence shortly at Black Flag.
- Large land holding secured over the **highly prospective Yerrida Basin** – review of geophysical data has identified high priority exploration targets.
- **Cobalt prospectivity** of the Maraloou Formation within the Yerrida Basin confirmed from review of historical exploration near DGO tenements.
- **Australian gold exploration has not focused on sediment hosted gold.**

# Corporate Structure

Share Capital	
Total Shares on Issue	5,797,268

Cash Position as at 31 October 2016	
Cash at bank	\$552,662
<b>Total</b>	<b>\$552,662</b>

Top 5 Shareholders	Percentage Holding
National Nominees Limited	19.96
Cairnglen Investments Pty Ltd	19.95
Resource Surveys Pty Ltd (including related parties)	14.89
Sheratan Pty Ltd (including related parties)	8.96
Scintilla Strategic Investments Ltd	5.17
<b>Holdings by Directors and related parties</b>	<b>23.86</b>

# Greenfield Exploration Strategy – Sediment Hosted Gold

- Strategy based on innovative research over the past 10 years by CODES at UTAS which led to a break-through in understanding peak times and formation processes for world class gold deposits.
- DGO entered into a research agreement with CODES at UTAS to access the research and database.
- Identifying structural settings conducive to the development of ore bodies, such as deep seated structures and anticlines within sedimentary basins.
- Using sediment hosted gold deposit (SHGD) analogues of world class gold deposits to target Australian sedimentary basins.
- DGO believes that Australian gold exploration has not been previously focused on sediment hosted gold mineralisation and or deposits.

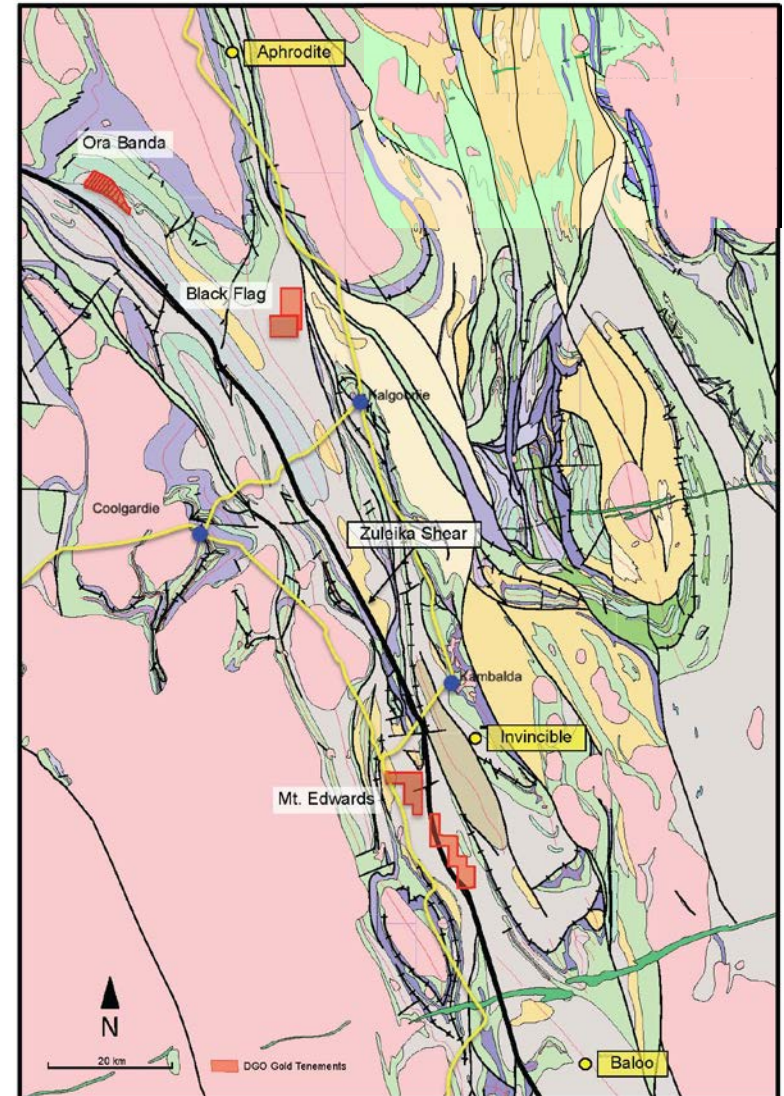
# Prospective Basins Secured

- Exploration land portfolios established in target basins through application and joint venture.
- DGO has secured tenure covering 3,175km<sup>2</sup> across:-
  - Western Australia; Eastern Goldfields, Yerrida Basin and the Pilbara, and
  - South Australia; Mt Barker, Dawson and Yerelina
- Review of past exploration data has identified drill targets at Judges and Black Flag.
- Evaluation of geophysical and geochemical data to identify drill ready targets is continuing.



# Eastern Goldfields Western Australia - Black Flag Beds

- Favourable geologic age identified by UTAS research, with recent discoveries confirming the prospectivity.
- DGO has secured three groups of tenements covering Black Flag Beds at Ora Banda, Black Flag and Mt Edwards in the Eastern Goldfields of WA.
- Analysis of past exploration has identified gold in shallow drilling with no significant deeper drilling.



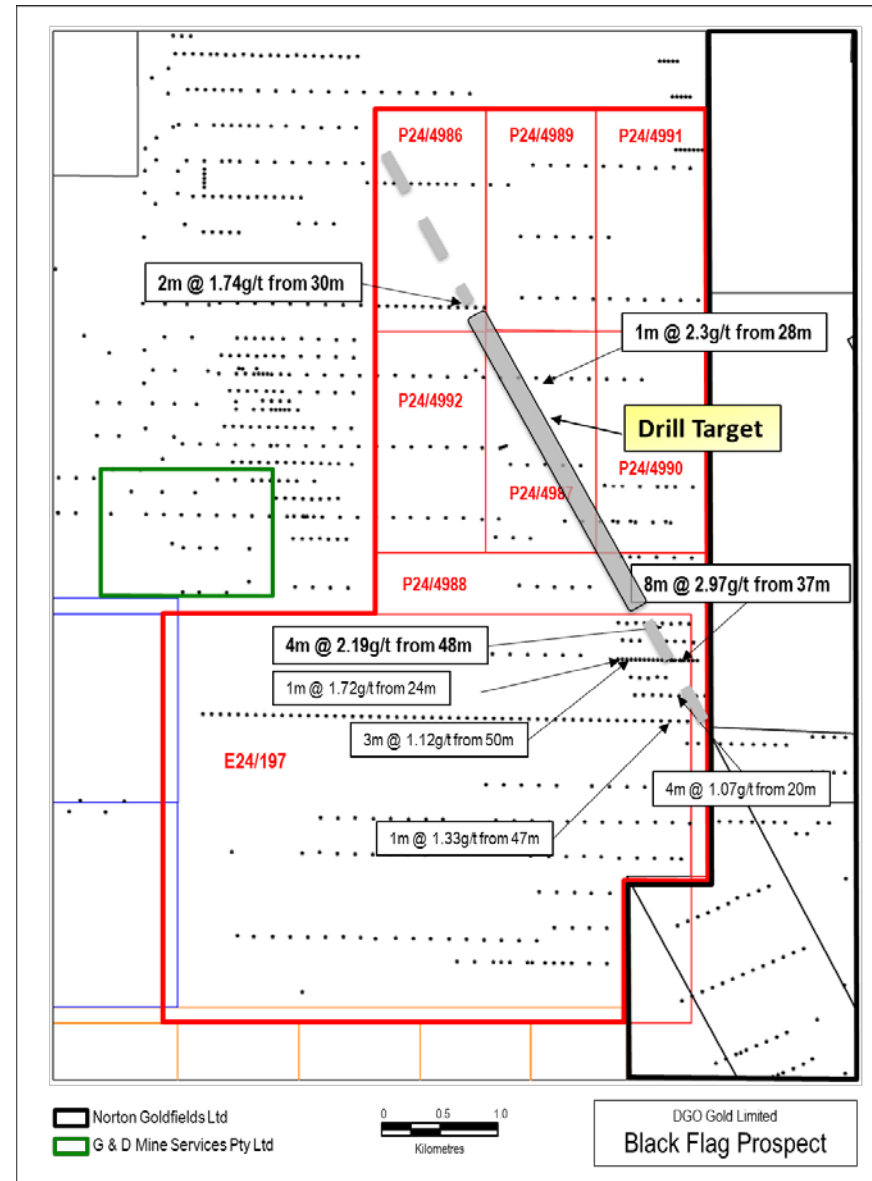
# Black Flag – Western Australia

**Drill target identified** in the Black Flag tenements based on a +3.0km long gold anomaly within saprolite of the Black Flag Group sediments.

Anomaly defined from the review of shallow drilling by previous explorers and consolidation of these Black Flag tenements by the Company 30 kilometers NW of Kalgoorlie.

Majority of previous intersections occur in the saprolite zone within broad spaced shallow predominantly aircore drilling.

Four 150m deep RC holes planned to test the northern portion of the gold anomaly to be drilled in the current quarter.





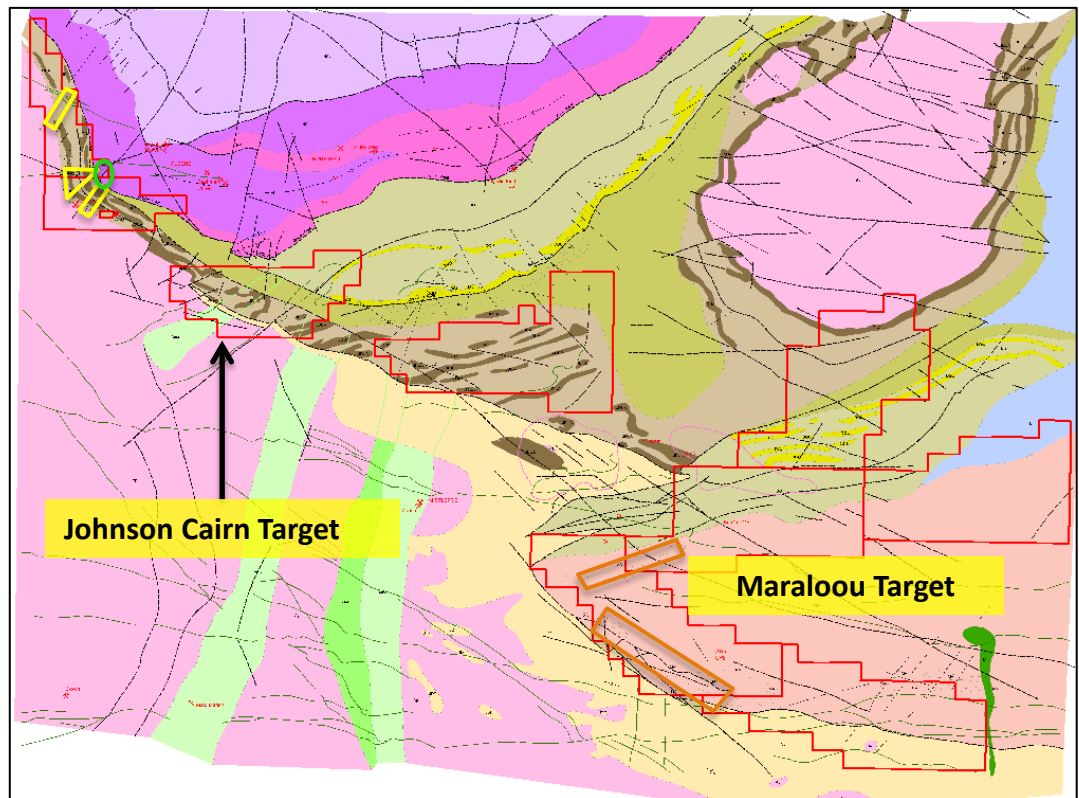
# Yerrida Basin Drill Targets Identified

DGO's holding in the Yerrida Basin 100 kilometers north of Meekatharra have been divided in to the **Johnson Cairn Target** and the **Maralooou Target**.

Eight ELA's and one granted EL JV are now held in the Yerrida Basin.

Tenure covers the western extension of the Monty/Borg/Bono stratigraphy and to the east the highly prospective basal contact of the Maralooou Formation.

Review of geophysical data by Barry Bourne of Terra Resources has identified target zones throughout DGO's holding.



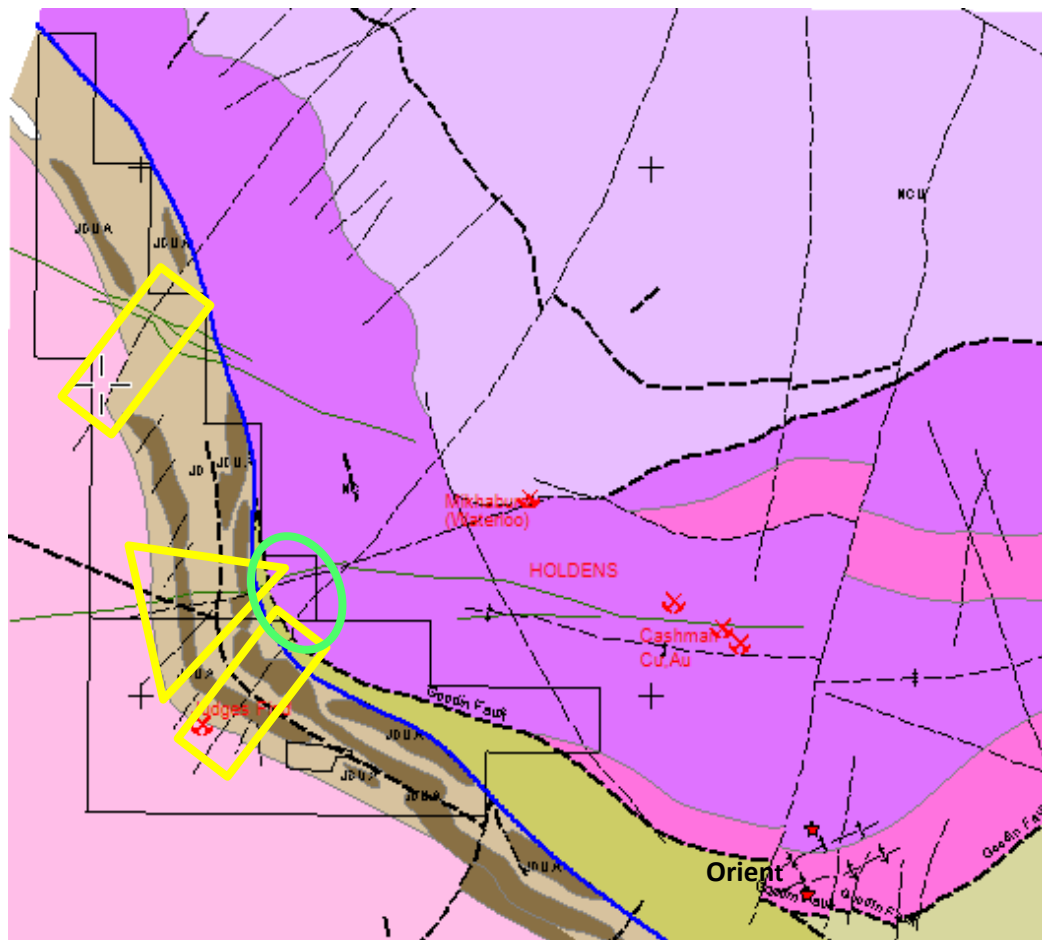
# Johnson Cairn Target – Drilling Planned

Sediment hosted gold targets (yellow polygons) and VHMS targets (green polygons) identified in Johnson Cairn Target area.

Sediment hosted gold targets are associated with major NE trending structures and anomalous gold values / nuggets within Johnson Cairn and Juderina Formations.

These Formations identified to be of the “right” age for sediment hosted gold mineralisation.

Co-funded RAB and RC drilling proposal submitted to test area of southern yellow polygons.



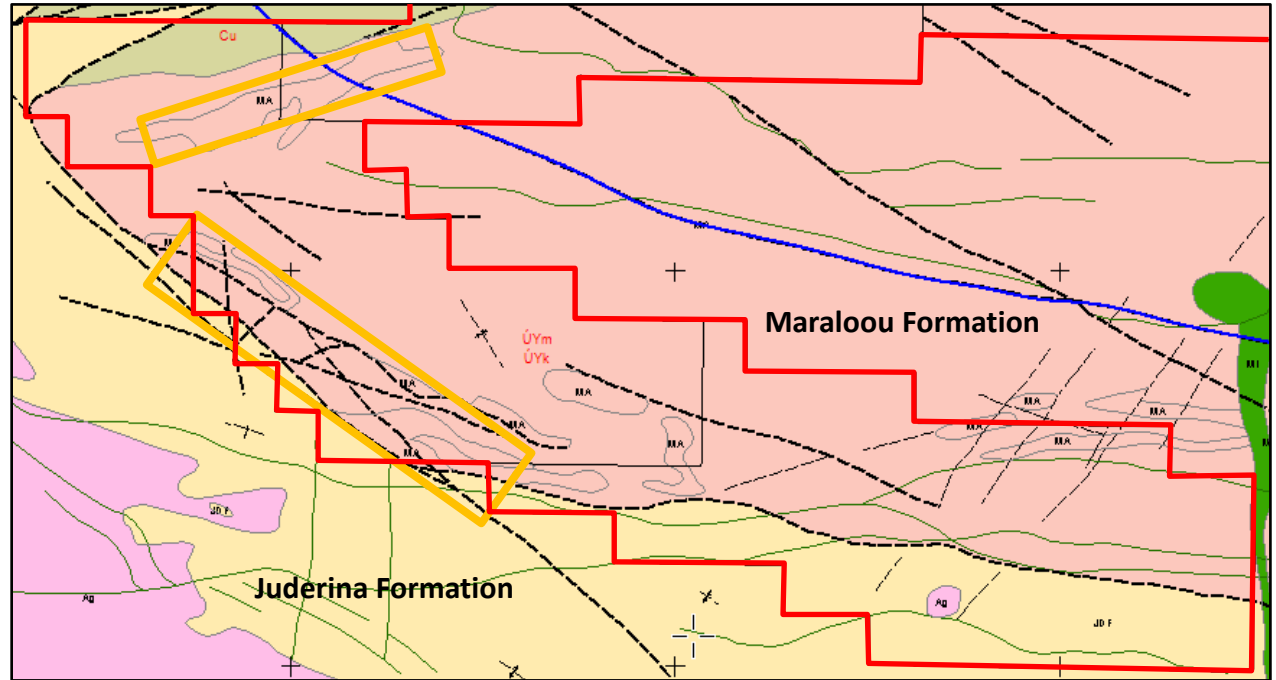
# Maralou Target

Tenements cover the prospective contact between the Juderina and Maralou Formations – the “right” age for the occurrence of sediment hosted gold mineralisation.

Maralou Formation has stratigraphic / lithological similarities with the DeGrussa / Monty / host sequence.

Two VHMS target areas associated with mafic portion towards the base of the Maralou Formation (orange polygons).

Limited past surface sampling adjacent to the target areas returned moderate copper anomalism.



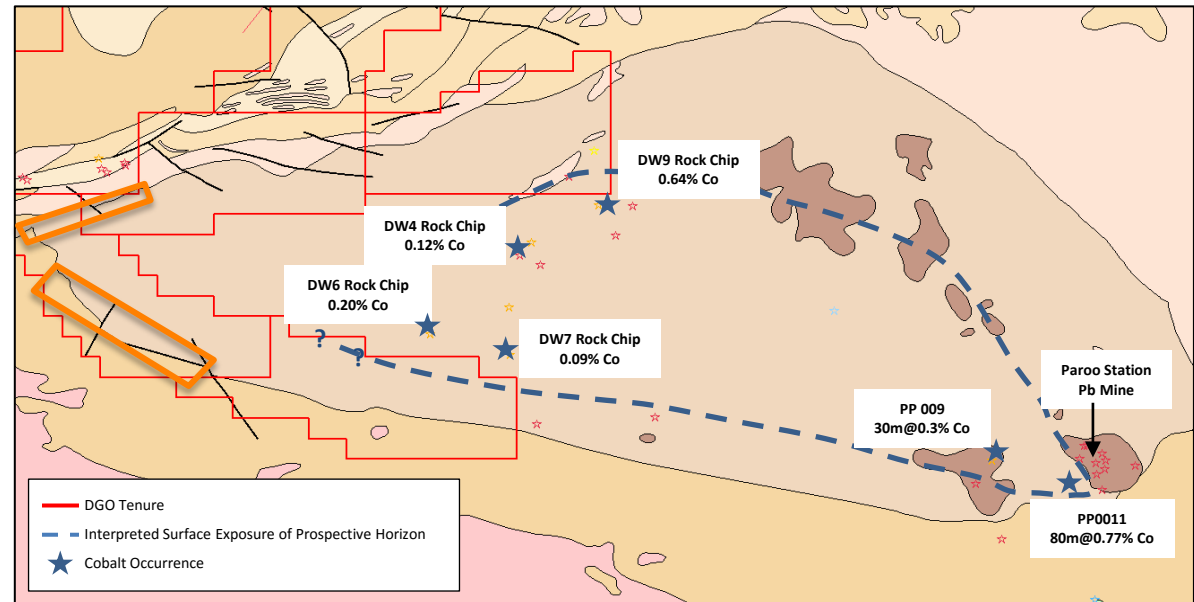
# Maraloou Target – Cobalt Prospectivity

Historical exploration within the Yerrida Basin has identified cobalt anomalism within the Maraloou Formation and adjacent to the lower contact with the Juderina Formation.

Drilling in 1983 returned up to 80m at 0.77% Co from 170m (PP 0011) in the same stratigraphic position as covered by DGO's southern Maraloou Target tenements.

Cobalt prospectivity of the basin confirmed by surface sampling near DGO tenements.

Broad parallels with the DRC – Zambian Copper Belt style mineralisation.

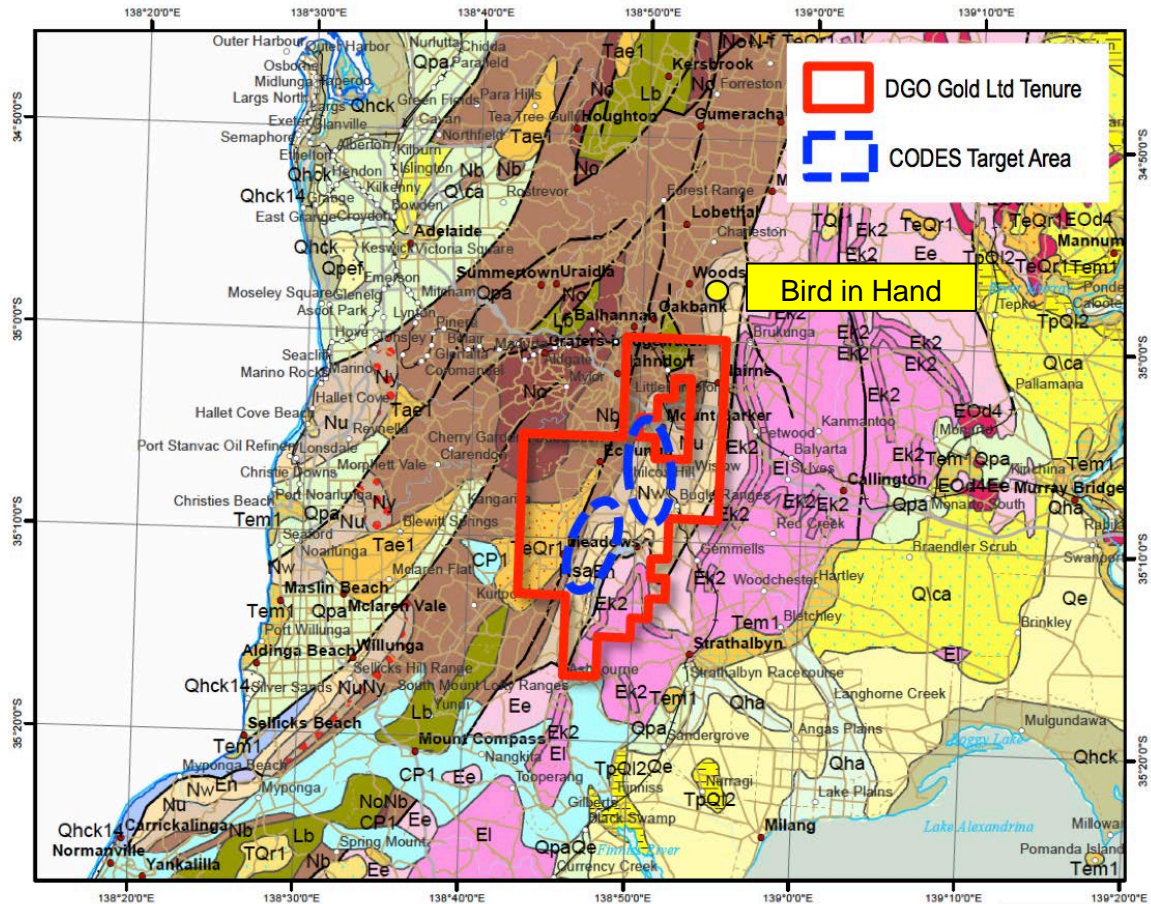


# Mt Barker – South Australia – CODES Target

Tenure overlies a series of folds in the prospective stratigraphy – Umberatana Group and Wilpena Group sediments.

The target, based on the Sukhoi Log analogue, is defined by the proximity to old gold workings and the presence of anticlinal folds.

The Bird in Hand deposit hosted in sediments to the north of DGO tenure – under feasibility study by Terramin Australia Ltd.





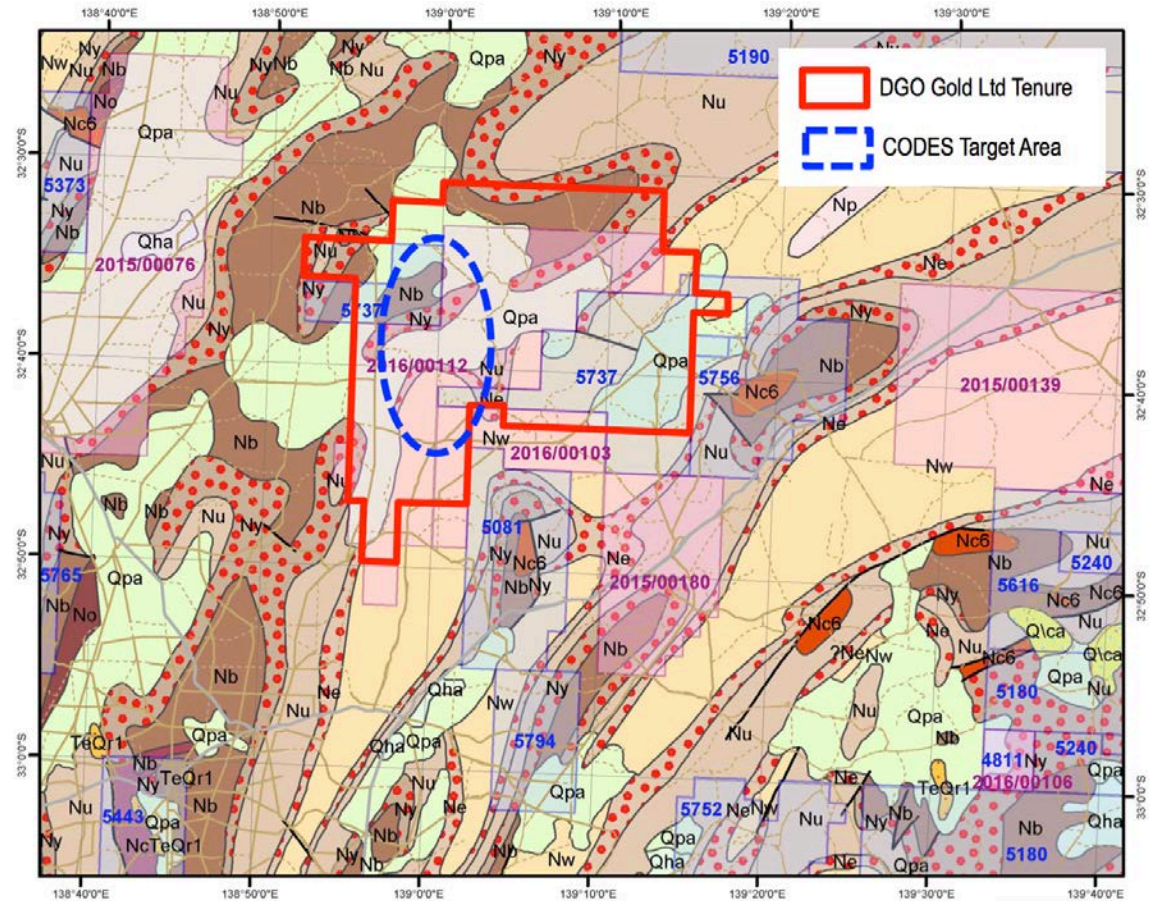
# Dawson – South Australia – CODES Target

Prospective stratigraphy with a large number of broad anticlinal folds.

Airborne magnetic data indicates presence of a large fault that could have acted as a mineralising fluid conduit.

Mt Grainger goldfield on anticlinal fold to the south of DGO tenure with known gold mineralisation parallel to the strike of anticlinal fold.

Land acquisition of CODES target area now complete.



# Summary

- **Drill targets have been identified;** at Black Flag in the Eastern Goldfields and Johnson Cairn in the Yerrida Basin of WA. Drilling at Black Flag in the December Quarter 2016 with a co-funded drilling submission lodged for Johnson Cairn.
- **Geophysical targets** adjacent to moderate copper anomalism from limited surface sampling have been identified proximal to the basal contact of the Maraloou Formation within the Yerrida Basin. These targets have not been tested in the past.
- **Cobalt prospectivity** of the Maraloou Formation confirmed by historical exploration near DGO tenements.
- DGO's greenfield exploration strategy is based on the excellent research by CODES at UTAS and using sediment hosted gold deposit analogues to target **Australian sedimentary basins** within the peak gold geologic times.
- **Australian gold exploration has not focused on sediment hosted gold.**